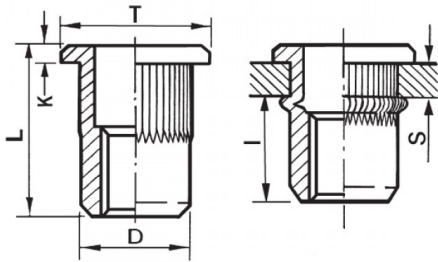





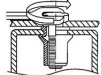
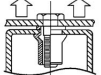
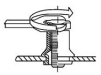
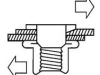
INSERTI FILETTATI CILINDRICI GODRONATI INOX A4 - TESTA TONDA
KNURLED A4 STAINLESS STEEL CYLINDRICAL THREADED INSERTS - FLAT HEAD
INSERTS FILETÉS CRANTÉS CYLINDRIQUES ACIER INOX A4- TÊTE CYLINDRIQUE
BLINDNIETMUTTERN RUNDSCHAFT GERÄNDELT EDELSTAHL A4- FLACHKOPF
TUERCAS REMACHABLES CILINDRICAS ESTRIADAS INOX A4 - CABEZA PLANA



ZIGRINATO SOTTO LA TESTA
KNURLED UNDERNEATH THE HEAD

| | | | | | | | | |
|---|------------------|------------------------|---|--------------------|---------------------|--------------------|---------------|---|
|  | S GRIP | D +0.07/-0.1 |  | T +/-0.5 | K +/-0.15 | L +/-0.5 | I ~ |  |
| M5 | 2,5-4,0 | 6,9 | 7 | 10 | 1 | 16.5 | 9,2 | 8,5 |

MATERIAL: STAINLESS STEEL A4

| | | | |
|---|---|--|---|
|  MAX TIGHTENING TORQUE (Nm) 8,5 |  PULL-OUT FORCE (N) 11500 |  TORQUE TO TURN (Nm) 2 |  SHEAR FORCE (N) 2000 |
|---|---|--|---|

Disegno di proprietà della Fixi S.r.l. - Non può essere copiato, riprodotto o comunicato a terze persone senza autorizzazione.
 Drawing owned by Fixi S.r.l.- It cannot be copied, reproduced or communicated to third parties without permission.

Disegnato da / Designed by: Ufficio Tecnico
Ufficio Tecnico / Tech Office: tech@fixi.it

22/12/2024

CODICE PRODOTTO / PART NUMBER

85IXA4ITTGM05L



FIXI s.r.l. Via Bellardi 40/A
 10146 - Torino (Italy)
 www.fixi.it - info@fixi.it