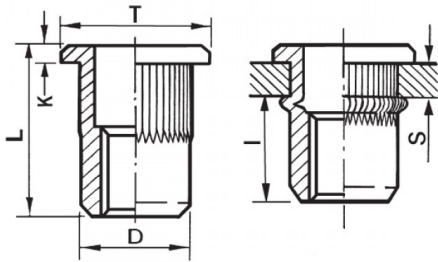





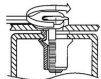
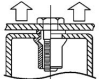
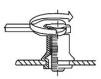
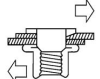
**INSERTI FILETTATI CILINDRICI GODRONATI INOX A4 - TESTA TONDA**  
**KNURLED A4 STAINLESS STEEL CYLINDRICAL THREADED INSERTS - FLAT HEAD**  
**INSERTS FILETÉS CRANTÉS CYLINDRIQUES ACIER INOX A4- TÊTE CYLINDRIQUE**  
**BLINDNIETMUTTERN RUNDSCHAFT GERÄNDELT EDELSTAHL A4- FLACHKOPF**  
**TUERCAS REMACHABLES CILINDRICAS ESTRIADAS INOX A4 - CABEZA PLANA**



**ZIGRINATO SOTTO LA TESTA**  
**KNURLED UNDERNEATH THE HEAD**

	<b>S</b> GRIP	<b>D</b> +0.07/-0.1		<b>T</b> +/-0.5	<b>K</b> +/-0.15	<b>L</b> +/-0.5	<b>I</b> ~	
M10	3,0-6,0	12,9	13	19	2	22	15	50

**MATERIAL: STAINLESS STEEL A4**

 MAX TIGHTENING TORQUE (Nm) 50	 PULL-OUT FORCE (N) 32000	 TORQUE TO TURN (Nm) 11	 SHEAR FORCE (N) 5000
--	---	---	---

Disegno di proprietà della Fixi S.r.l. - Non può essere copiato, riprodotto o comunicato a terze persone senza autorizzazione.  
 Drawing owned by Fixi S.r.l.- It cannot be copied, reproduced or communicated to third parties without permission.

**Disegnato da / Designed by:** Ufficio Tecnico  
**Ufficio Tecnico / Tech Office:** tech@fixi.it

22/12/2024

**CODICE PRODOTTO / PART NUMBER**

85IXA4ITTGM10L13

**FIXI®**

FIXI s.r.l. Via Bellardi 40/A  
 10146 - Torino (Italy)  
 www.fixi.it - info@fixi.it