

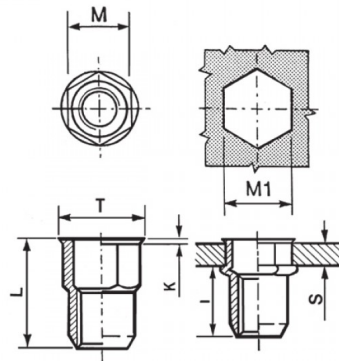
INSERTI FILETTATI SEMIESAGONALI INOX A4 - TESTA RIDOTTA




SEMI-HEXAGONAL A4 STAINLESS STEEL THREADED INSERTS - REDUCED COUNTERSUNK HEAD

INSERTS FILETÉS SEMI-HEXAGONAUX ACIER INOX A4 - TÊTE RÉDUITE

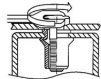
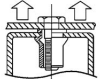
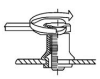
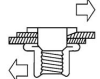
BLINDNIETMUTTERN TEILSECHSKANT EDELSTAHL A4 - KLEINER SENKKOPF

TUERCAS REMACHABLES SEMI-HEXAGONALES INOX A4 - CABEZA REDUCIDA



	S GRIP	D		T +/-0,5	K +/-0.15	L +/-0,5	I ~	
M5	0,5-2,5	6,9	7	8	0,6	13	8	6

MATERIAL: STAINLESS STEEL A4

			
MAX TIGHTENING TORQUE (Nm) 6	PULL-OUT FORCE (N) 11500	TORQUE TO TURN (Nm) 1,5	SHEAR FORCE (N) 2000

Disegno di proprietà della Fixi S.r.l. - Non può essere copiato, riprodotto o comunicato a terze persone senza autorizzazione.
Drawing owned by Fixi S.r.l.- It cannot be copied, reproduced or communicated to third parties without permission.

Disegnato da / Designed by: Ufficio Tecnico
Ufficio Tecnico / Tech Office: tech@fixi.it

05/02/2025

CODICE PRODOTTO / PART NUMBER

85IXA4IERSEM05C

FIXI®

FIXI s.r.l. Via Bellardi 40/A
10146 - Torino (Italy)
www.fixi.it - info@fixi.it