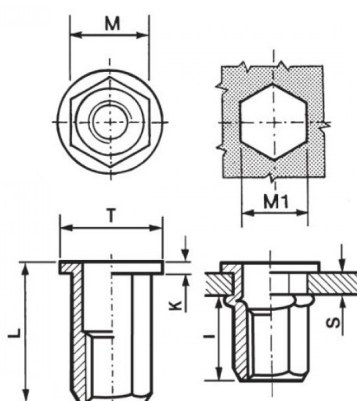


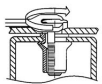
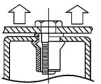
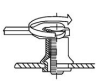
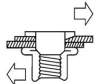


**INSERTI FILETTATI ESAGONALI TESTA TONDA**  
**HEXAGONAL FLAT HEAD THREADED INSERTS**  
**FLACHKOPF BLINDNIETMUTTERN SECHSKANTSCHAFT**  
**INSERTS FILETÉS HEXAGONAUX TÊTE CYLINDRIQUE**  
**TUERCAS REMACHABLES HEXAGONALES CABEZA PLANA**



|  | GRIP    | M<br>+0,07/-0,1 | M1<br>+0,1/-0 | T<br>+/-0,5 | K<br>+/-0,15 | L  | I<br>~ |  |
|---|---------|-----------------|---------------|-------------|--------------|----|--------|---|
| M12   | 2,0-5,0 | 15,9            | 16            | 23          | 2            | 27 | 16,5   | 80  |

**MATERIAL: STAINLESS STEEL A2**

|  |   |   |   |
|--|---|---|---|
| <br>MAX TIGHTENING<br>TORQUE (Nm)<br>80 | <br>PULL-OUT<br>FORCE (N)<br>34000 | <br>TORQUE TO<br>TURN (Nm)<br>30 | <br>SHEAR<br>FORCE (N)<br>6500 |
|--|---|---|---|

Disegno di proprietà della Fixi S.r.l. - Non può essere copiato, riprodotto o comunicato a terze persone senza autorizzazione.  
 Drawing owned by Fixi S.r.l.- It cannot be copied, reproduced or communicated to third parties without permission.

Disegnato da / Designed by: Ufficio Tecnico  
 Ufficio Tecnico / Tech Office: tech@fixi.it

08/09/2024

**CODICE PRODOTTO / PART NUMBER**

**85IXITTEM12C16**

**FIXI®**

FIXI s.r.l. Via Bellardi 40/A  
 10146 - Torino (Italy)  
 www.fixi.it - info@fixi.it