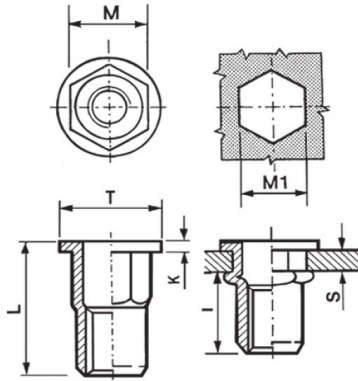


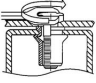
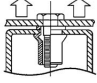
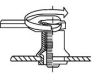
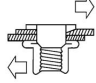


INSERTI FILETTATI SEMIESAGONALI ACCIAIO - TESTA TONDA
SEMI-HEXAGONAL STEEL THREADED INSERTS - FLAT HEAD
INSERTS FILETÉS SEMI-HEXAGONAUX ACIER - TÊTE CYLINDRIQUE
BLINDNIETMUTTERN TEILSECHSKANT STAHL- FLACHKOPF
TUERCAS REMACHABLES SEMI-HEXAGONALES ACERO - CABEZA PLANA



|  | S GRIP | M +0,07-0,1 | M1 +0,1/-0 | T +/-0,5 | K +/-0,15 | L +/-0,5 | I ~ |  |
|---|-----------|----------------|---------------|-------------|--------------|-------------|--------|---|
| M8 | 1 - 4 | 10.9 | 11 | 15.9 | 1.5 | 18.2 | 10.5 | 26 |

MATERIAL: STEEL ZINC PLATED CR III

| | | | |
|--|---|--|---|
|  MAX TIGHTENING TORQUE (Nm) 26 |  PULL-OUT FORCE (N) 25000 |  TORQUE TO TURN (Nm) 5,5 |  SHEAR FORCE (N) 4400 |
|--|---|--|---|

Disegno di proprietà della Fixi S.r.l. - Non può essere copiato, riprodotto o comunicato a terze persone senza autorizzazione.
 Drawing owned by Fixi S.r.l.- It cannot be copied, reproduced or communicated to third parties without permission.

Disegnato da / Designed by: Ufficio Tecnico
Ufficio Tecnico / Tech Office: tech@fixi.it

03/01/2025

CODICE PRODOTTO / PART NUMBER

85MSCL

FIXI®

FIXI s.r.l. Via Bellardi 40/A
 10146 - Torino (Italy)
 www.fixi.it - info@fixi.it