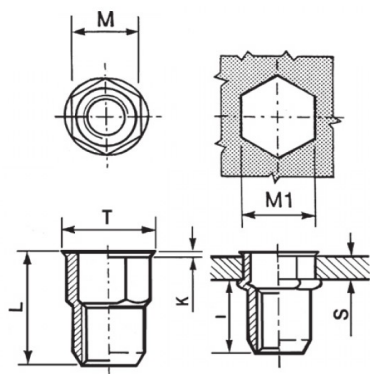




**INSERTI FILETTATI SEMIESAGONALI ACCIAIO - TESTA RIDOTTA**  
**SEMI-HEXAGONAL STEEL THREADED INSERTS - REDUCED COUNTERSUNK HEAD**  
**INSERTS FILETÉS SEMI-HEXAGONAUX ACIER - TÊTE RÉDUITE COURT**  
**BLINDNIETMUTTERN TEILSECHSKANT STAHL - KLEINER SENKKOPF**  
**TUERCAS REMACHABLES SEMI-HEXAGONALES ACERO - CABEZA REDUCIDA**

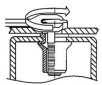
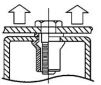
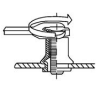
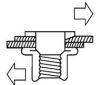


K dopo la posa  
K after setting



	<b>S</b> GRIP	<b>M</b> +0,07-0,1	<b>M1</b> +0,1/-0	<b>T</b> +/-0,5	<b>K</b> +/-0,15	<b>L</b> +/-0,5	<b>I</b> ~	
M6	1 - 3.5	8.9	9	10	0.6	16	10.5	11

**MATERIAL:** STEEL ZINC PLATED CR III

 MAX TIGHTENING TORQUE (Nm) 11	 PULL-OUT FORCE (N) 16500	 TORQUE TO TURN (Nm) 3,5	 SHEAR FORCE (N) 3000
--	---	--	---

Disegno di proprietà della Fixi S.r.l. - Non può essere copiato, riprodotto o comunicato a terze persone senza autorizzazione.  
 Drawing owned by Fixi S.r.l.- It cannot be copied, reproduced or communicated to third parties without permission.

**Disegnato da / Designed by:** Ufficio Tecnico  
**Ufficio Tecnico / Tech Office:** tech@fixi.it

18/10/2024

**CODICE PRODOTTO / PART NUMBER**

85ACIERSEM06C

**FIXI®**

FIXI s.r.l. Via Bellardi 40/A  
 10146 - Torino (Italy)  
 www.fixi.it - info@fixi.it