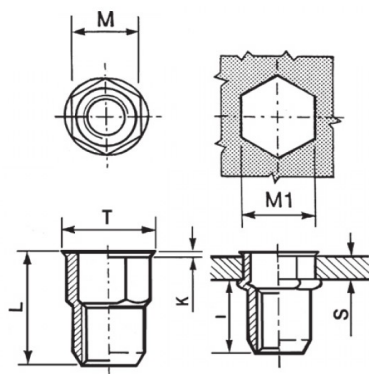




**INSERTI FILETTATI SEMIESAGONALI ACCIAIO - TESTA RIDOTTA**  
**SEMI-HEXAGONAL STEEL THREADED INSERTS - REDUCED COUNTERSUNK HEAD**  
**INSERTS FILETÉS SEMI-HEXAGONAUX ACIER - TÊTE RÉDUITE COURT**  
**BLINDNIETMUTTERN TEILSECHSKANT STAHL - KLEINER SENKKOPF**  
**TUERCAS REMACHABLES SEMI-HEXAGONALES ACERO - CABEZA REDUCIDA**

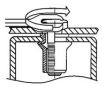
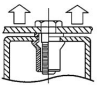
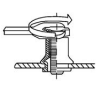
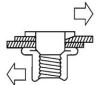


K dopo la posa  
K after setting



	S GRIP	M +0,07-0,1	M1 +0,1/-0	T +/-0,5	K +/-0,15	L +/-0,5	I ~	
M12	1.5 - 4	15.9	16	17.5	0.8	24	16	50

**MATERIAL:** STEEL ZINC PLATED CR III

 MAX TIGHTENING TORQUE (Nm) 50	 PULL-OUT FORCE (N) 34000	 TORQUE TO TURN (Nm) 24	 SHEAR FORCE (N) 6500
--	---	---	---

Disegno di proprietà della Fixi S.r.l. - Non può essere copiato, riprodotto o comunicato a terze persone senza autorizzazione.  
Drawing owned by Fixi S.r.l.- It cannot be copied, reproduced or communicated to third parties without permission.

Disegnato da / Designed by: Ufficio Tecnico  
Ufficio Tecnico / Tech Office: tech@fixi.it

08/09/2024

**CODICE PRODOTTO / PART NUMBER**

**85ACIERSEM12C16**

**FIXI®**

FIXI s.r.l. Via Bellardi 40/A  
10146 - Torino (Italy)  
www.fixi.it - info@fixi.it