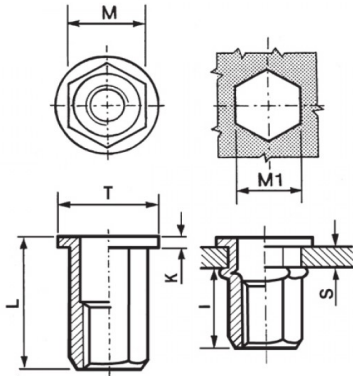


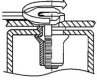
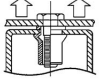
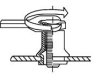
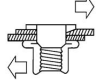


INSERTI FILETTATI ESAGONALI ACCIAIO - TESTA TONDA
HEXAGONAL STEEL THREADED INSERTS - FLAT HEAD
INSERTS FILETÉS HEXAGONAUX ACIER - TÊTE CYLINDRIQUE
BLINDNIETMUTTERN SECHSKANTSCHAFT STAHL - FLACHKOPF
TUERCAS REMACHABLES HEXAGONALES STAHL - CABEZA PLANA



|  | S | M | M1 | T | K | L | I |  |
|---|---------|-----------|---------|--------|---------|--------|-----|---|
| | GRIP | +0,07-0,1 | +0,1/-0 | +/-0,5 | +/-0,15 | +/-0,5 | ~ | |
| M6 | 0.5 - 3 | 8.9 | 9 | 13 | 1.2 | 16 | 9.5 | 15 |

MATERIAL: STEEL ZINC PLATED CR III

| | | | |
|---|---|---|---|
|  |  |  |  |
| MAX TIGHTENING TORQUE (Nm) | PULL-OUT FORCE (N) | TORQUE TO TURN (Nm) | SHEAR FORCE (N) |
| 15 | 16500 | 4,5 | 3000 |

Disegno di proprietà della Fixi S.r.l. - Non può essere copiato, riprodotto o comunicato a terze persone senza autorizzazione.
 Drawing owned by Fixi S.r.l.- It cannot be copied, reproduced or communicated to third parties without permission.

Disegnato da / Designed by: Ufficio Tecnico
Ufficio Tecnico / Tech Office: tech@fixi.it

22/12/2024

CODICE PRODOTTO / PART NUMBER

85ACITTEM06C

FIXI®

FIXI s.r.l. Via Bellardi 40/A
 10146 - Torino (Italy)
 www.fixi.it - info@fixi.it