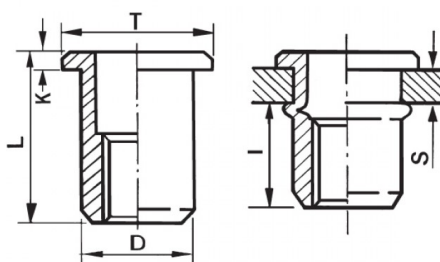





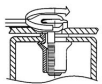
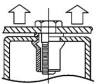
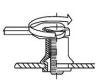
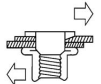
INSERTI FILETTATI CILINDRICI - TESTA TONDA
CYLINDRICAL THREADED INSERTS - FLAT HEAD
INSERTS FILETÉS CYLINDRIQUES - TÊTE CYLINDRIQUE
BLINDNIETMUTTERN RUNDSCHAFT - FLACHKOPF
TUERCAS REMACHABLES CILINDRICAS - CABEZA PLANA



ZIGRINATO SOTTO LA TESTA
KNURLED UNDERNEATH THE HEAD

| | | | | | | | | |
|---|------------------|------------------------|--|--------------------|---------------------|--------------------|---------------|---|
|  | S GRIP | D +0,07/-0,1 |  +0,1/-0 | T +/-0,5 | K +/-0,15 | L +/-0,5 | I ~ |  |
| M4 | 0.5 - 2 | 5.9 | 6 | 8.5 | 0.8 | 10.5 | 6 | 5 |

MATERIAL: STAINLESS STEEL A2

| | | | |
|---|--|--|---|
|  MAX TIGHTENING TORQUE (Nm) 5 |  PULL-OUT FORCE (N) 6800 |  TORQUE TO TURN (Nm) 1 |  SHEAR FORCE (N) 1500 |
|---|--|--|---|

Disegno di proprietà della Fixi S.r.l. - Non può essere copiato, riprodotto o comunicato a terze persone senza autorizzazione.
 Drawing owned by Fixi S.r.l.- It cannot be copied, reproduced or communicated to third parties without permission.

Disegnato da / Designed by: Ufficio Tecnico
Ufficio Tecnico / Tech Office: tech@fixi.it

22/12/2024

CODICE PRODOTTO / PART NUMBER

85IXITTM04C

FIXI®

FIXI s.r.l. Via Bellardi 40/A
 10146 - Torino (Italy)
 www.fixi.it - info@fixi.it