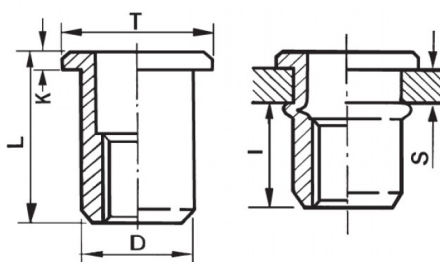





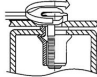
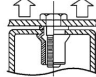
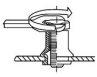
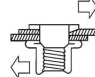
INSERTI FILETTATI CILINDRICI - TESTA TONDA
CYLINDRICAL THREADED INSERTS - FLAT HEAD
INSERTS FILETÉS CYLINDRIQUES - TÊTE CYLINDRIQUE
BLINDNIETMUTTERN RUNDSCHAFT - FLACHKOPF
TUERCAS REMACHABLES CILINDRICAS - CABEZA PLANA



ZIGRINATO SOTTO LA TESTA
KNURLED UNDERNEATH THE HEAD

|  | S GRIP | D +0,07/-0,1 |  +0,1/-0 | T +/-0,5 | K +/-0,15 | L +/-0,5 | I ~ |  |
|---|------------------|------------------------|--|--------------------|---------------------|--------------------|---------------|---|
| M10 | 0.8 - 3.5 | 11.9 | 12 | 16 | 1.7 | 19 | 10.5 | 50 |

MATERIAL: STAINLESS STEEL A2

| | | | |
|--|---|---|---|
|  MAX TIGHTENING TORQUE (Nm) 50 |  PULL-OUT FORCE (N) 32000 |  TORQUE TO TURN (Nm) 11 |  SHEAR FORCE (N) 5000 |
|--|---|---|---|

Disegno di proprietà della Fixi S.r.l. - Non può essere copiato, riprodotto o comunicato a terze persone senza autorizzazione.
 Drawing owned by Fixi S.r.l.- It cannot be copied, reproduced or communicated to third parties without permission.

Disegnato da / Designed by: Ufficio Tecnico
Ufficio Tecnico / Tech Office: tech@fixi.it

22/12/2024

CODICE PRODOTTO / PART NUMBER

85IXITTM10C12

FIXI®

FIXI s.r.l. Via Bellardi 40/A
 10146 - Torino (Italy)
 www.fixi.it - info@fixi.it