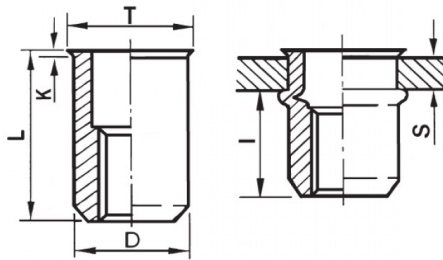





INSERTI FILETTATI CILINDRICI - TESTA RIDOTTA
CYLINDRICAL THREADED INSERTS - REDUCED COUNTERSUNK HEAD
INSERTS FILETÉS CYLINDRIQUES - TÊTE RÉDUITE
BLINDNIETMUTTERN RUNDSCHAFT - KLEINER SENKKOPF
TUERCAS REMACHABLES CILINDRICAS - CABEZA REDUCIDA

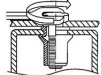
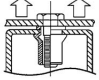
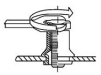
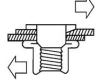


K dopo la posa
K after setting



	S GRIP	D +0,07/-0,1		T +/-0,5	K +/-0,15	L +/-0,5	I ~	
M3	0.3 - 1.5	4.9	5	5.6	0.35	8.5	5.5	1

MATERIAL: STAINLESS STEEL A2

 MAX TIGHTENING TORQUE (Nm) 1	 PULL-OUT FORCE (N) 3900	 TORQUE TO TURN (Nm) 0,4	 SHEAR FORCE (N) 900
---	--	--	--

Disegno di proprietà della Fixi S.r.l. - Non può essere copiato, riprodotto o comunicato a terze persone senza autorizzazione.
 Drawing owned by Fixi S.r.l.- It cannot be copied, reproduced or communicated to third parties without permission.

Disegnato da / Designed by: Ufficio Tecnico
 Ufficio Tecnico / Tech Office: tech@fixi.it

22/12/2024

CODICE PRODOTTO / PART NUMBER

85IXITRM03C

FIXI®

FIXI s.r.l. Via Bellardi 40/A
 10146 - Torino (Italy)
 www.fixi.it - info@fixi.it