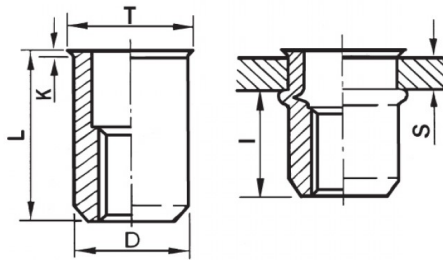





INSERTI FILETTATI CILINDRICI - TESTA RIDOTTA
CYLINDRICAL THREADED INSERTS - REDUCED COUNTERSUNK HEAD
INSERTS FILETÉS CYLINDRIQUES - TÊTE RÉDUITE
BLINDNIETMUTTERN RUNDSCHAFT - KLEINER SENKKOPF
TUERCAS REMACHABLES CILINDRICAS - CABEZA REDUCIDA

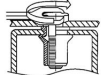
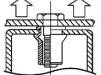
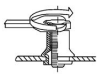
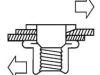


K dopo la posa
K after setting



	S GRIP	D +0,07/-0,1		T +/-0,5	K +/-0,15	L +/-0,5	I ~	
M5	0.5 - 2	6.9	7	8	0.5	11.5	7	6

MATERIAL: STAINLESS STEEL A2

 MAX TIGHTENING TORQUE (Nm) 6	 PULL-OUT FORCE (N) 11500	 TORQUE TO TURN (Nm) 1,5	 SHEAR FORCE (N) 2000
---------------------------------------------------------------------------------------------------------------------------	-----------------------------------------------------------------------------------------------------------------------	----------------------------------------------------------------------------------------------------------------------	---------------------------------------------------------------------------------------------------------------------

Disegno di proprietà della Fixi S.r.l. - Non può essere copiato, riprodotto o comunicato a terze persone senza autorizzazione.
Drawing owned by Fixi S.r.l.- It cannot be copied, reproduced or communicated to third parties without permission.

Disegnato da / Designed by: Ufficio Tecnico
Ufficio Tecnico / Tech Office: tech@fixi.it

22/12/2024

CODICE PRODOTTO / PART NUMBER

85IXITRM05C

FIXI®

FIXI s.r.l. Via Bellardi 40/A
10146 - Torino (Italy)
www.fixi.it - info@fixi.it