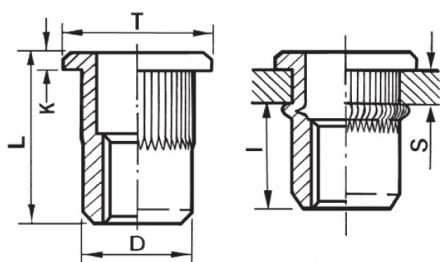





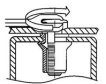
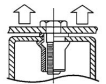
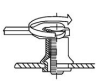
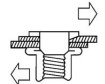
**INSERTI FILETTATI CILINDRICI GODRONATI - TESTA TONDA**  
**KNURLED CYLINDRICAL THREADED INSERTS - FLAT HEAD**  
**INSERTS FILETÉS CRANTÉS CYLINDRIQUES - TÊTE CYLINDRIQUE**  
**BLINDNIETMUTTERN RUNDSCHAFT GERÄNDELT - FLACHKOPF**  
**TUERCAS REMACHABLES CILINDRICAS ESTRIADAS - CABEZA PLANA**



**ZIGRINATO SOTTO LA TESTA**  
**KNURLED UNDERNEATH THE HEAD**

	<b>S</b> GRIP	<b>D</b> +0,07/-0,1	 +0,1/-0	<b>T</b> +/-0,5	<b>K</b> +/-0,15	<b>L</b> +/-0,5	<b>I</b> ~	
M5	2 - 4	6.9	7	10	1	16	8	8.5

**MATERIAL: STAINLESS STEEL A2**

 MAX TIGHTENING TORQUE (Nm) 8.5	 PULL-OUT FORCE (N) 11500	 TORQUE TO TURN (Nm) 2	 SHEAR FORCE (N) 2000
---	---	---	---

Disegno di proprietà della Fixi S.r.l. - Non può essere copiato, riprodotto o comunicato a terze persone senza autorizzazione.  
 Drawing owned by Fixi S.r.l.- It cannot be copied, reproduced or communicated to third parties without permission.

**Disegnato da / Designed by:** Ufficio Tecnico  
**Ufficio Tecnico / Tech Office:** tech@fixi.it

22/12/2024

**CODICE PRODOTTO / PART NUMBER**

85IXITTGM05L

**FIXI®**

FIXI s.r.l. Via Bellardi 40/A  
 10146 - Torino (Italy)  
 www.fixi.it - info@fixi.it