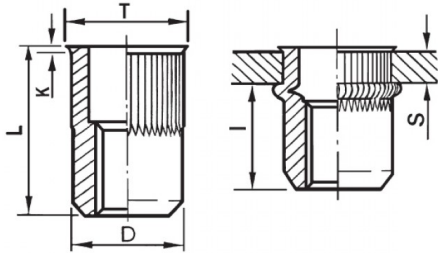





**INSERTI FILETTATI CILINDRICI GODRONATI I - TESTA RIDOTTA**  
**KNURLED CYLINDRICAL THREADED INSERTS - REDUCED COUNTERSUNK HEAD**  
**INSERTS FILETÉS CRANTÉS CYLINDRIQUES- TÊTE RÉDUITE**  
**BLINDNIETMUTTERN RUNDSCHAFT GERÄNDELT - KLEINER SENKKOPF**  
**TUERCAS REMACHABLES CILINDRICAS ESTRIADAS - CABEZA REDUCIDA**



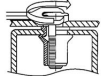
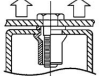
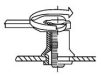
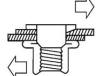
K dopo la posa  
K after setting



**ZIGRINATO SOTTO LA TESTA**  
**KNURLED UNDERNEATH THE HEAD**

	S GRIP	D +0,07/-0,1		T +/-0,5	K +/-0,15	L +/-0,5	I ~	
M3	0.5 - 2	4.9	5	6	0.4	9	5.5	1

**MATERIAL: STAINLESS STEEL A2**

 MAX TIGHTENING TORQUE (Nm) 1	 PULL-OUT FORCE (N) 3900	 TORQUE TO TURN (Nm) 0,4	 SHEAR FORCE (N) 900
---	--	--	--

Disegno di proprietà della Fixi S.r.l. - Non può essere copiato, riprodotto o comunicato a terze persone senza autorizzazione.  
Drawing owned by Fixi S.r.l.- It cannot be copied, reproduced or communicated to third parties without permission.

Disegnato da / Designed by: Ufficio Tecnico  
Ufficio Tecnico / Tech Office: tech@fixi.it

08/09/2024

**CODICE PRODOTTO / PART NUMBER**

**85IXITRGM03C**

**FIXI®**

FIXI s.r.l. Via Bellardi 40/A  
10146 - Torino (Italy)  
www.fixi.it - info@fixi.it