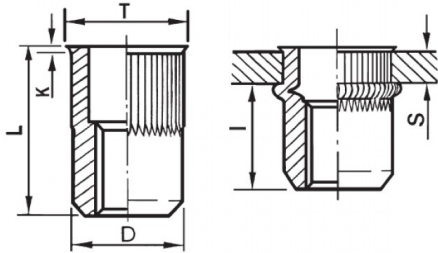





**INSERTI FILETTATI CILINDRICI GODRONATI I - TESTA RIDOTTA**  
**KNURLED CYLINDRICAL THREADED INSERTS - REDUCED COUNTERSUNK HEAD**  
**INSERTS FILETÉS CRANTÉS CYLINDRIQUES- TÊTE RÉDUITE**  
**BLINDNIETMUTTERN RUNDSCHAFT GERÄNDELT - KLEINER SENKKOPF**  
**TUERCAS REMACHABLES CILINDRICAS ESTRIADAS - CABEZA REDUCIDA**

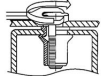
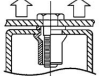
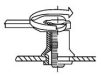
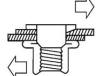
K dopo la posa  
K after setting



**ZIGRINATO SOTTO LA TESTA**  
**KNURLED UNDERNEATH THE HEAD**

	S	D		T	K	L	I	
	GRIP	+0,07/-0,1	+0,1/-0	+/-0,5	+/-0,15	+/-0,5	~	
M4	0.5 - 2	5.9	6	7	0.5	10.5	6.5	3

**MATERIAL: STAINLESS STEEL A2**

			
MAX TIGHTENING TORQUE (Nm)	PULL-OUT FORCE (N)	TORQUE TO TURN (Nm)	SHEAR FORCE (N)
3	6800	0,8	1500

Disegno di proprietà della Fixi S.r.l. - Non può essere copiato, riprodotto o comunicato a terze persone senza autorizzazione.  
Drawing owned by Fixi S.r.l.- It cannot be copied, reproduced or communicated to third parties without permission.

Disegnato da / Designed by: Ufficio Tecnico  
Ufficio Tecnico / Tech Office: tech@fixi.it

08/09/2024

**CODICE PRODOTTO / PART NUMBER**

**85IXITRGM04C**

**FIXI®**

FIXI s.r.l. Via Bellardi 40/A  
10146 - Torino (Italy)  
www.fixi.it - info@fixi.it