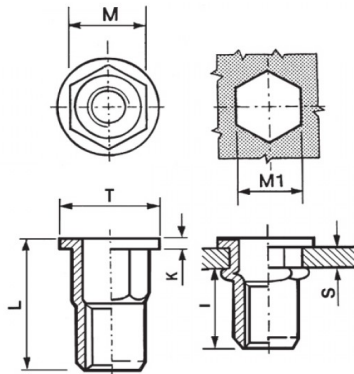


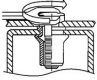
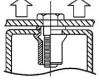
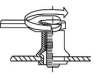
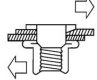


INSERTI FILETTATI SEMIESAGONALI - TESTA TONDA
SEMI-HEXAGONAL THREADED INSERTS - FLAT HEAD
INSERTS FILETÉS SEMI-HEXAGONAUX - TÊTE CYLINDRIQUE
BLINDNIETMUTTERN TEILSECHSKANT - FLACHKOPF
TUERCAS REMACHABLES SEMI-HEXAGONALES - CABEZA PLANA



| | | | | | | | | |
|---|------------------|------------------------|----------------------|--------------------|---------------------|--------------------|---------------|---|
|  | S GRIP | M +0,07/-0,1 | M1 +0,1/-0 | T +/-0,5 | K +/-0,15 | L +/-0,5 | I ~ |  |
| M4 | 2 - 4 | 5.9 | 6 | 9 | 0.75 | 12.5 | 6 | 5 |

MATERIAL: STAINLESS STEEL A2

| | | | |
|---|---|---|---|
|  |  |  |  |
| MAX TIGHTENING TORQUE (Nm) | PULL-OUT FORCE (N) | TORQUE TO TURN (Nm) | SHEAR FORCE (N) |
| 5 | 6800 | 1 | 1500 |

Disegno di proprietà della Fixi S.r.l. - Non può essere copiato, riprodotto o comunicato a terze persone senza autorizzazione.
 Drawing owned by Fixi S.r.l.- It cannot be copied, reproduced or communicated to third parties without permission.

Disegnato da / Designed by: Ufficio Tecnico
Ufficio Tecnico / Tech Office: tech@fixi.it

03/01/2025

CODICE PRODOTTO / PART NUMBER

85IXITTSEM04L

FIXI®

FIXI s.r.l. Via Bellardi 40/A
 10146 - Torino (Italy)
 www.fixi.it - info@fixi.it