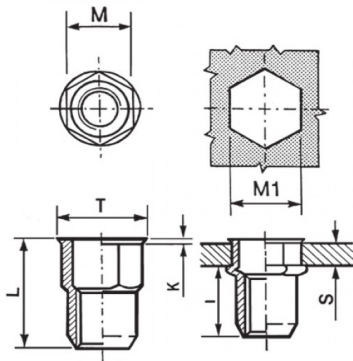




INSERTI FILETTATI SEMIESAGONALI - TESTA RIDOTTA
SEMI-HEXAGONAL THREADED INSERTS - REDUCED COUNTERSUNK HEAD
INSERTS FILETÉS SEMI-HEXAGONAUX - TÊTE RÉDUITE
BLINDNIETMUTTERN TEILSECHSKANT - KLEINER SENKKOPF
TUERCAS REMACHABLES SEMI-HEXAGONALES - CABEZA REDUCIDA

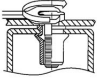
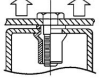
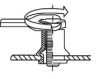
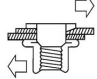


K dopo la posa
K after setting



|  | S GRIP | M +0,07/-0,1 | M1 +0,1/-0 | T +/-0,5 | K +/-0,15 | L +/-0,5 | I ~ |  |
|---|-----------|-----------------|---------------|-------------|--------------|-------------|--------|---|
| M10 | 2 - 4.5 | 11.9 | 12 | 13.5 | 0.8 | 19.5 | 11.2 | 32 |

MATERIAL: STAINLESS STEEL A2

| | | | |
|--|---|--|---|
|  MAX TIGHTENING TORQUE (Nm) 32 |  PULL-OUT FORCE (N) 32000 |  TORQUE TO TURN (Nm) 8,5 |  SHEAR FORCE (N) 5000 |
|--|---|--|---|

Disegno di proprietà della Fixi S.r.l. - Non può essere copiato, riprodotto o comunicato a terze persone senza autorizzazione.
 Drawing owned by Fixi S.r.l.- It cannot be copied, reproduced or communicated to third parties without permission.

Disegnato da / Designed by: Ufficio Tecnico
 Ufficio Tecnico / Tech Office: tech@fixi.it

22/12/2024

CODICE PRODOTTO / PART NUMBER

85IXIERSEM10L12

FIXI®

FIXI s.r.l. Via Bellardi 40/A
 10146 - Torino (Italy)
 www.fixi.it - info@fixi.it