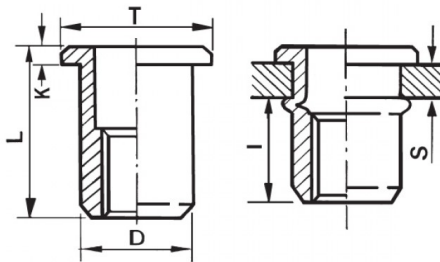





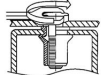
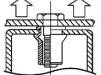
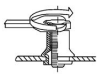
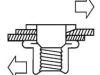
INSERTI FILETTATI CILINDRICI ALLUMINIO - TESTA TONDA
CYLINDRICAL ALUMINIUM THREADED INSERTS - FLAT HEAD
INSERTS FILETÉS CYLINDRIQUES ALUMINIUM - TÊTE CYLINDRIQUE
BLINDNIETMUTTERN RUNDSCHAFT ALUMINIUM - FLACHKOPF
TUERCAS REMACHABLES CILINDRICAS ALUMINIO - CABEZA PLANA



ZIGRINATO SOTTO LA TESTA
KNURLED UNDERNEATH THE HEAD

	S GRIP	D +0,07-0,1		T +/-0,5	K +/-0,15	L +/-0,5	I	
M5	0.5 - 2.5	6.9	7	10	1	13	7.5	5

MATERIAL: ALUMINIUM AIMg 2,5

			
MAX TIGHTENING TORQUE (Nm) 5	PULL-OUT FORCE (N) 6500	TORQUE TO TURN (Nm) 1,5	SHEAR FORCE (N) 1200

Disegno di proprietà della Fixi S.r.l. - Non può essere copiato, riprodotto o comunicato a terze persone senza autorizzazione.
 Drawing owned by Fixi S.r.l.- It cannot be copied, reproduced or communicated to third parties without permission.

Disegnato da / Designed by: Ufficio Tecnico
Ufficio Tecnico / Tech Office: tech@fixi.it

22/11/2024

CODICE PRODOTTO / PART NUMBER

85ALITTM05C



FIXI s.r.l. Via Bellardi 40/A
 10146 - Torino (Italy)
 www.fixi.it - info@fixi.it