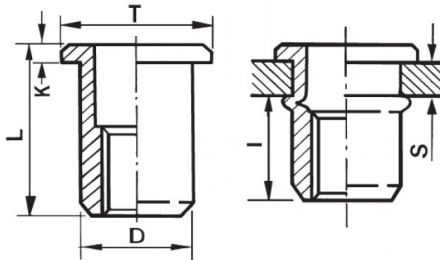





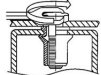
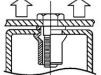
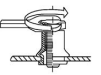
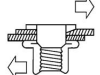
**INSERTI FILETTATI CILINDRICI ALLUMINIO - TESTA TONDA**  
**CYLINDRICAL ALUMINIUM THREADED INSERTS - FLAT HEAD**  
**INSERTS FILETÉS CYLINDRIQUES ALUMINIUM - TÊTE CYLINDRIQUE**  
**BLINDNIETMUTTERN RUNDSCHAFT ALUMINIUM - FLACHKOPF**  
**TUERCAS REMACHABLES CILINDRICAS ALUMINIO - CABEZA PLANA**



**ZIGRINATO SOTTO LA TESTA**  
**KNURLED UNDERNEATH THE HEAD**

	<b>S</b> GRIP	<b>D</b> +0,07-0,1		<b>T</b> +0,5	<b>K</b> +0,15	<b>L</b> +0,5	<b>I</b>	
M5	3 - 5	6,9	7	10	1.2	15.5	7.7	5

**MATERIAL:** ALUMINIUM AIMg 2,5

 MAX TIGHTENING TORQUE (Nm) 5	 PULL-OUT FORCE (N) 6500	 TORQUE TO TURN (Nm) 1,5	 SHEAR FORCE (N) 1200
---	--	---	---

Disegno di proprietà della Fixi S.r.l. - Non può essere copiato, riprodotto o comunicato a terze persone senza autorizzazione.  
 Drawing owned by Fixi S.r.l.- It cannot be copied, reproduced or communicated to third parties without permission.

**Disegnato da / Designed by:** Ufficio Tecnico  
**Ufficio Tecnico / Tech Office:** tech@fixi.it

22/11/2024

**CODICE PRODOTTO / PART NUMBER**

85ALITTM05L

**FIXI®**

FIXI s.r.l. Via Bellardi 40/A  
 10146 - Torino (Italy)  
 www.fixi.it - info@fixi.it