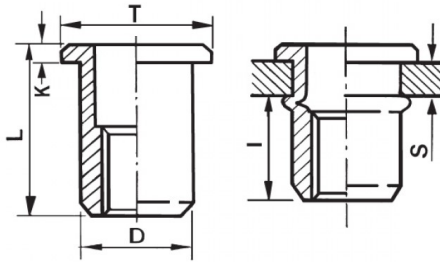





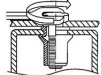
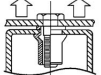
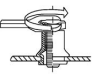
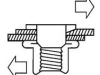
INSERTI FILETTATI CILINDRICI ALLUMINIO - TESTA TONDA
CYLINDRICAL ALUMINIUM THREADED INSERTS - FLAT HEAD
INSERTS FILETÉS CYLINDRIQUES ALUMINIUM - TÊTE CYLINDRIQUE
BLINDNIETMUTTERN RUNDSCHAFT ALUMINIUM - FLACHKOPF
TUERCAS REMACHABLES CILINDRICAS ALUMINIO - CABEZA PLANA



ZIGRINATO SOTTO LA TESTA
KNURLED UNDERNEATH THE HEAD

|  | S GRIP | D +0,07-0,1 |  | T +/-0,5 | K +/-0,15 | L +/-0,5 | I |  |
|---|------------------|-----------------------|---|--------------------|---------------------|--------------------|----------|---|
| M10 | 4.5 - 7.5 | 12.9 | 13 | 19 | 2 | 27,5 | 14.5 | 25 |

MATERIAL: ALUMINIUM AIMg 2,5

| | | | |
|--|---|---|---|
|  MAX TIGHTENING TORQUE (Nm) 25 |  PULL-OUT FORCE (N) 17500 |  TORQUE TO TURN (Nm) 6,5 |  SHEAR FORCE (N) 3800 |
|--|---|---|---|

Disegno di proprietà della Fixi S.r.l. - Non può essere copiato, riprodotto o comunicato a terze persone senza autorizzazione.
 Drawing owned by Fixi S.r.l.- It cannot be copied, reproduced or communicated to third parties without permission.

Disegnato da / Designed by: Ufficio Tecnico
Ufficio Tecnico / Tech Office: tech@fixi.it

22/11/2024

CODICE PRODOTTO / PART NUMBER

85ALITTM10L13

FIXI®

FIXI s.r.l. Via Bellardi 40/A
 10146 - Torino (Italy)
 www.fixi.it - info@fixi.it