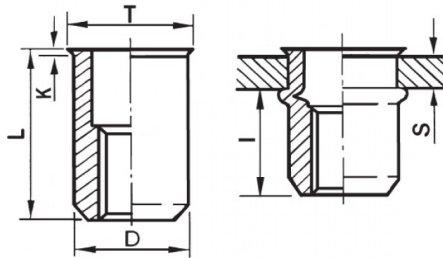





**INSERTI FILETTATI CILINDRICI ALLUMINIO - TESTA RIDOTTA**  
**CYLINDRICAL ALUMINIUM THREADED INSERTS - REDUCED COUNTERSUNK HEAD**  
**INSERTS FILETÉS CYLINDRIQUES ALUMINIUM - TÊTE RÉDUITE**  
**BLINDNIETMUTTERN RUNDSCHAFT ALUMINIUM - KLEINER SENKKOPF**  
**TUERCAS REMACHABLES CILINDRICAS ALUMINIO - CABEZA REDUCIDA**



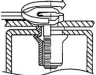
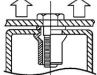
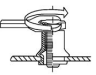
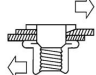
K dopo la posa  
K after setting



**ZIGRINATO SOTTO LA TESTA**  
**KNURLED UNDERNEATH THE HEAD**

	S GRIP	D +0,07-0,1		T +0,5	K +0,15	L +0,5	I ~	
M3	0.3 - 1.5	4.9	5	5.6	0.35	8.5	5.5	0.7

**MATERIAL:** ALUMINIUM AIMg 2,5

 MAX TIGHTENING TORQUE (Nm) 0.7	 PULL-OUT FORCE (N) 1900	 TORQUE TO TURN (Nm) 0,2	 SHEAR FORCE (N) 600
---	--	--	--

Disegno di proprietà della Fixi S.r.l. - Non può essere copiato, riprodotto o comunicato a terze persone senza autorizzazione.  
Drawing owned by Fixi S.r.l.- It cannot be copied, reproduced or communicated to third parties without permission.

**Disegnato da / Designed by:** Ufficio Tecnico  
**Ufficio Tecnico / Tech Office:** tech@fixi.it

22/12/2024

**CODICE PRODOTTO / PART NUMBER**

85ALITRM03C

**FIXI®**

FIXI s.r.l. Via Bellardi 40/A  
10146 - Torino (Italy)  
www.fixi.it - info@fixi.it