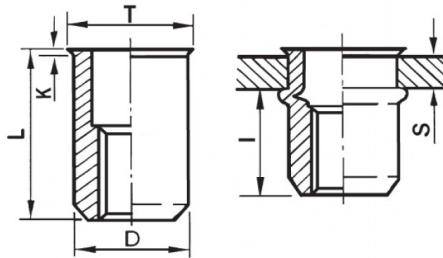





**INSERTI FILETTATI CILINDRICI ALLUMINIO - TESTA RIDOTTA**  
**CYLINDRICAL ALUMINIUM THREADED INSERTS - REDUCED COUNTERSUNK HEAD**  
**INSERTS FILETÉS CYLINDRIQUES ALUMINIUM - TÊTE RÉDUITE**  
**BLINDNIETMUTTERN RUNDSCHAFT ALUMINIUM - KLEINER SENKKOPF**  
**TUERCAS REMACHABLES CILINDRICAS ALUMINIO - CABEZA REDUCIDA**



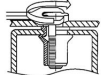
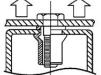
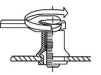
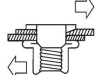
K dopo la posa  
K after setting



**ZIGRINATO SOTTO LA TESTA**  
**KNURLED UNDERNEATH THE HEAD**

|  | S<br>GRIP | D<br>+0,07-0,1 |  | T<br>+0,5 | K<br>+0,15 | L<br>+0,5 | I<br>~ |  |
|---|-----------|----------------|---|-----------|------------|-----------|--------|---|
| M4  | 2.5 - 4   | 5.9            | 6   | 7         | 0.5        | 13        | 6      | 2.5   |

**MATERIAL:** ALUMINIUM AIMg 2,5

|   |  |   |   |
|---|--|---|---|
| <br>MAX TIGHTENING<br>TORQUE (Nm)<br>2.5 | <br>PULL-OUT<br>FORCE (N)<br>4000 | <br>TORQUE TO<br>TURN (Nm)<br>0,7 | <br>SHEAR<br>FORCE (N)<br>1000 |
|---|--|---|---|

Disegno di proprietà della Fixi S.r.l. - Non può essere copiato, riprodotto o comunicato a terze persone senza autorizzazione.  
Drawing owned by Fixi S.r.l. - It cannot be copied, reproduced or communicated to third parties without permission.

**Disegnato da / Designed by:** Ufficio Tecnico  
**Ufficio Tecnico / Tech Office:** tech@fixi.it

22/12/2024

**CODICE PRODOTTO / PART NUMBER**

85ALITRM04L

**FIXI®**

FIXI s.r.l. Via Bellardi 40/A  
10146 - Torino (Italy)  
www.fixi.it - info@fixi.it