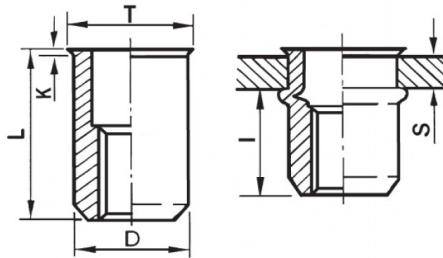





**INSERTI FILETTATI CILINDRICI ALLUMINIO - TESTA RIDOTTA**  
**CYLINDRICAL ALUMINIUM THREADED INSERTS - REDUCED COUNTERSUNK HEAD**  
**INSERTS FILETÉS CYLINDRIQUES ALUMINIUM - TÊTE RÉDUITE**  
**BLINDNIETMUTTERN RUNDSCHAFT ALUMINIUM - KLEINER SENKKOPF**  
**TUERCAS REMACHABLES CILINDRICAS ALUMINIO - CABEZA REDUCIDA**



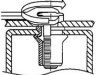
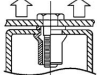
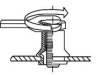
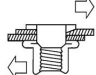
K dopo la posa  
K after setting



**ZIGRINATO SOTTO LA TESTA**  
**KNURLED UNDERNEATH THE HEAD**

	S GRIP	D +0,07-0,1		T +0,5	K +0,15	L +0,5	I ~	
M10	0.8 - 3	11.9	12	13.5	0.8	18	11.2	25

**MATERIAL:** ALUMINIUM AIMg 2,5

 MAX TIGHTENING TORQUE (Nm) 25	 PULL-OUT FORCE (N) 17500	 TORQUE TO TURN (Nm) 5	 SHEAR FORCE (N) 3800
--	---	--	---

Disegno di proprietà della Fixi S.r.l. - Non può essere copiato, riprodotto o comunicato a terze persone senza autorizzazione.  
Drawing owned by Fixi S.r.l.- It cannot be copied, reproduced or communicated to third parties without permission.

**Disegnato da / Designed by:** Ufficio Tecnico  
**Ufficio Tecnico / Tech Office:** tech@fixi.it

22/12/2024

**CODICE PRODOTTO / PART NUMBER**

85ALITRM10C12

**FIXI®**

FIXI s.r.l. Via Bellardi 40/A  
10146 - Torino (Italy)  
www.fixi.it - info@fixi.it