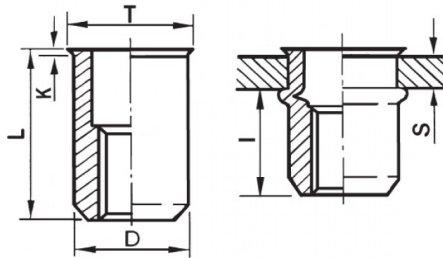





INSERTI FILETTATI CILINDRICI ALLUMINIO - TESTA RIDOTTA
CYLINDRICAL ALUMINIUM THREADED INSERTS - REDUCED COUNTERSUNK HEAD
INSERTS FILETÉS CYLINDRIQUES ALUMINIUM - TÊTE RÉDUITE
BLINDNIETMUTTERN RUNDSCHAFT ALUMINIUM - KLEINER SENKKOPF
TUERCAS REMACHABLES CILINDRICAS ALUMINIO - CABEZA REDUCIDA



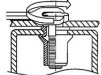
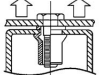
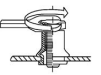
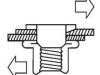
K dopo la posa
K after setting



ZIGRINATO SOTTO LA TESTA
KNURLED UNDERNEATH THE HEAD

	S	D		T	K	L	I	
	GRIP	+0,07-0,1	+0,1/-0	+0,5	+0,15	+0,5	~	
M10	1 - 3	12.9	13	14	0.7	17.5	12	25

MATERIAL: ALUMINIUM AIMg 2,5

			
MAX TIGHTENING TORQUE (Nm)	PULL-OUT FORCE (N)	TORQUE TO TURN (Nm)	SHEAR FORCE (N)
25	17500	5	3800

Disegno di proprietà della Fixi S.r.l. - Non può essere copiato, riprodotto o comunicato a terze persone senza autorizzazione.
 Drawing owned by Fixi S.r.l.- It cannot be copied, reproduced or communicated to third parties without permission.

Disegnato da / Designed by: Ufficio Tecnico
Ufficio Tecnico / Tech Office: tech@fixi.it

22/12/2024

CODICE PRODOTTO / PART NUMBER

85ALITRM10C13

FIXI®

FIXI s.r.l. Via Bellardi 40/A
 10146 - Torino (Italy)
 www.fixi.it - info@fixi.it