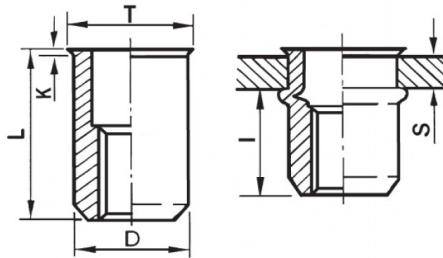





INSERTI FILETTATI CILINDRICI ALLUMINIO - TESTA RIDOTTA
CYLINDRICAL ALUMINIUM THREADED INSERTS - REDUCED COUNTERSUNK HEAD
INSERTS FILETÉS CYLINDRIQUES ALUMINIUM - TÊTE RÉDUITE
BLINDNIETMUTTERN RUNDSCHAFT ALUMINIUM - KLEINER SENKKOPF
TUERCAS REMACHABLES CILINDRICAS ALUMINIO - CABEZA REDUCIDA



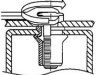
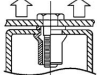
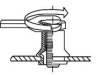
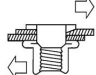
K dopo la posa
K after setting



ZIGRINATO SOTTO LA TESTA
KNURLED UNDERNEATH THE HEAD

	S GRIP	D +0,07-0,1		T +0,5	K +0,15	L +0,5	I ~	
M12	3.5 - 7.5	15.9	16	17.2	0.6	27.5	16	25

MATERIAL: ALUMINIUM AIMg 2,5

 MAX TIGHTENING TORQUE (Nm) 25	 PULL-OUT FORCE (N) -	 TORQUE TO TURN (Nm) 16	 SHEAR FORCE (N) -
--	---	---	--

Disegno di proprietà della Fixi S.r.l. - Non può essere copiato, riprodotto o comunicato a terze persone senza autorizzazione.
Drawing owned by Fixi S.r.l.- It cannot be copied, reproduced or communicated to third parties without permission.

Disegnato da / Designed by: Ufficio Tecnico
Ufficio Tecnico / Tech Office: tech@fixi.it

22/12/2024

CODICE PRODOTTO / PART NUMBER

85ALITRM12L16

FIXI®

FIXI s.r.l. Via Bellardi 40/A
10146 - Torino (Italy)
www.fixi.it - info@fixi.it