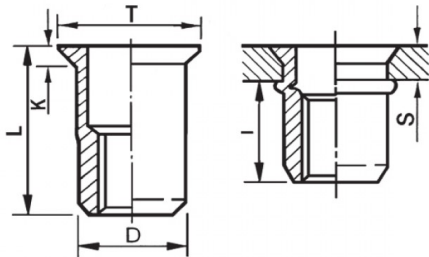





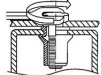
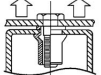
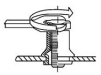
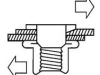
INSERTI FILETTATI CILINDRICI ALLUMINIO - TESTA SVASATA
CYLINDRICAL ALUMINIUM THREADED INSERTS - COUNTERSUNK HEAD
INSERTS FILETÉS CYLINDRIQUES ALUMINIUM - TÊTE FRAISÉE
BLINDNIETMUTTERN RUNDSCHAFT ALUMINIUM- SENKKOPF
TUERCAS REMACHABLES CLINDRICAS ALUMINIO - CABEZA AVELLANADA



ZIGRINATO SOTTO LA TESTA
KNURLED UNDERNEATH THE HEAD

	S GRIP	D +0,07-0,1	 +0,1/-0	T +0,5	K +0,15	L +0,5	I ~	
M4	2.5 - 4	5.9	6	9	1.5	13	6	2.5

MATERIAL: ALUMINIUM AIMg 2,5

 MAX TIGHTENING TORQUE (Nm) 2.5	 PULL-OUT FORCE (N) 4000	 TORQUE TO TURN (Nm) 0,7	 SHEAR FORCE (N) 1000
---	--	--	---

Disegno di proprietà della Fixi S.r.l. - Non può essere copiato, riprodotto o comunicato a terze persone senza autorizzazione.
 Drawing owned by Fixi S.r.l.- It cannot be copied, reproduced or communicated to third parties without permission.

Disegnato da / Designed by: Ufficio Tecnico
Ufficio Tecnico / Tech Office: tech@fixi.it

18/10/2024

CODICE PRODOTTO / PART NUMBER

85ALITSM04L

FIXI®

FIXI s.r.l. Via Bellardi 40/A
 10146 - Torino (Italy)
 www.fixi.it - info@fixi.it