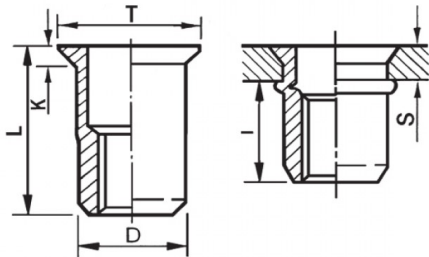





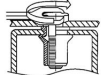
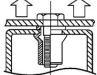
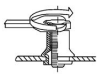
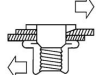
INSERTI FILETTATI CILINDRICI ALLUMINIO - TESTA SVASATA
CYLINDRICAL ALUMINIUM THREADED INSERTS - COUNTERSUNK HEAD
INSERTS FILETÉS CYLINDRIQUES ALUMINIUM - TÊTE FRAISÉE
BLINDNIETMUTTERN RUNDSCHAFT ALUMINIUM- SENKKOPF
TUERCAS REMACHABLES CLINDRICAS ALUMINIO - CABEZA AVELLANADA



ZIGRINATO SOTTO LA TESTA
KNURLED UNDERNEATH THE HEAD

|  | S GRIP | D +0,07-0,1 |  +0,1/-0 | T +0,5 | K +0,15 | L +0,5 | I ~ |  |
|---|------------------|-----------------------|--|------------------|-------------------|------------------|---------------|---|
| M5 | 4 - 6 | 6.9 | 7 | 10 | 1.5 | 15 | 7 | 5 |

MATERIAL: ALUMINIUM AIMg 2,5

| | | | |
|---|--|--|---|
|  MAX TIGHTENING TORQUE (Nm) 5 |  PULL-OUT FORCE (N) 6500 |  TORQUE TO TURN (Nm) 1,2 |  SHEAR FORCE (N) 1200 |
|---|--|--|---|

Disegno di proprietà della Fixi S.r.l. - Non può essere copiato, riprodotto o comunicato a terze persone senza autorizzazione.
 Drawing owned by Fixi S.r.l.- It cannot be copied, reproduced or communicated to third parties without permission.

Disegnato da / Designed by: Ufficio Tecnico
Ufficio Tecnico / Tech Office: tech@fixi.it

03/01/2025

CODICE PRODOTTO / PART NUMBER

85ALITSM05L

FIXI®

FIXI s.r.l. Via Bellardi 40/A
 10146 - Torino (Italy)
 www.fixi.it - info@fixi.it