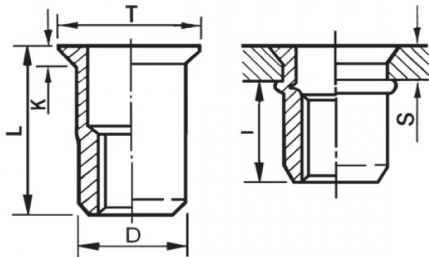





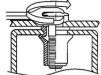
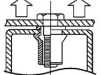
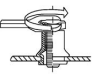
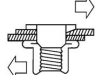
**INSERTI FILETTATI CILINDRICI ALLUMINIO - TESTA SVASATA**  
**CYLINDRICAL ALUMINIUM THREADED INSERTS - COUNTERSUNK HEAD**  
**INSERTS FILETÉS CYLINDRIQUES ALUMINIUM - TÊTE FRAISÉE**  
**BLINDNIETMUTTERN RUNDSCHAFT ALUMIUM- SENKKOPF**  
**TUERCAS REMACHABLES CLINDRICAS ALUMINIO - CABEZA AVELLANADA**



**ZIGRINATO SOTTO LA TESTA**  
**KNURLED UNDERNEATH THE HEAD**

	<b>S</b> GRIP	<b>D</b> +0,07-0,1	 +0,1/-0	<b>T</b> +0,5	<b>K</b> +0,15	<b>L</b> +0,5	<b>I</b> ~	
M12	1.7 - 4.5	15.9	16	19	1.9	26	17.5	25

**MATERIAL:** ALUMINIUM AIMg 2,5

 MAX TIGHTENING TORQUE (Nm) 25	 PULL-OUT FORCE (N) -	 TORQUE TO TURN (Nm) 16	 SHEAR FORCE (N) -
--	---	--	--

Disegno di proprietà della Fixi S.r.l. - Non può essere copiato, riprodotto o comunicato a terze persone senza autorizzazione.  
 Drawing owned by Fixi S.r.l.- It cannot be copied, reproduced or communicated to third parties without permission.

**Disegnato da / Designed by:** Ufficio Tecnico  
**Ufficio Tecnico / Tech Office:** tech@fixi.it

03/01/2025

**CODICE PRODOTTO / PART NUMBER**

85ALITSM12C16

**FIXI®**

FIXI s.r.l. Via Bellardi 40/A  
 10146 - Torino (Italy)  
 www.fixi.it - info@fixi.it