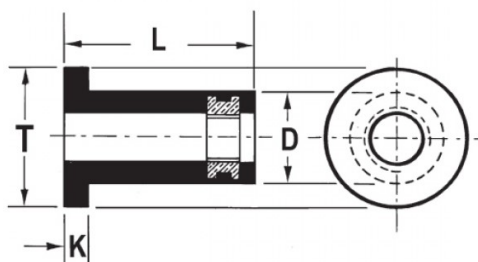





INSERTI FILETTATI SPECIALI - NEOPRENE / OTTONE
SPECIAL THREADED INSERTS - NEOPRENE / BRASS
INSERTS FILETÉS SPÉCIAUX - NÉOPRÈNE / LAITON
SONDERANFERTIGUNGEN - NEOPREN / MESSING
INSERTOS ROSCADOS ESPECIALES - NEOPRENO / LATON



|  | S | D |  | T | K | L |  Nm |
|---|---------|-----------|---|--------|--------|-----------|--|
| M3 | 0.4 - 4 | +0.1/-0.2 | +0,1/-0 | +/-0.3 | +/-0.3 | +1.0/-0.5 | 0.36 |

MATERIALE: NEOPRENE-OTTONE

Disegno di proprietà della Fixi S.r.l. - Non può essere copiato, riprodotto o comunicato a terze persone senza autorizzazione.
 Drawing owned by Fixi S.r.l.- It cannot be copied, reproduced or communicated to third parties without permission.

Disegnato da / Designed by: Ufficio Tecnico
Ufficio Tecnico / Tech Office: tech@fixi.it

26/12/2024

CODICE PRODOTTO / PART NUMBER

85RN314

FIXI®

FIXI s.r.l. Via Bellardi 40/A
 10146 - Torino (Italy)
 www.fixi.it - info@fixi.it