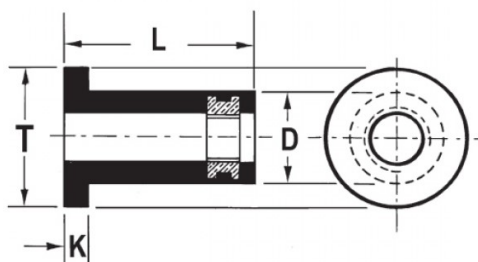





**INSERTI FILETTATI SPECIALI - NEOPRENE / OTTONE**  
**SPECIAL THREADED INSERTS - NEOPRENE / BRASS**  
**INSERTS FILETÉS SPÉCIAUX - NÉOPRÈNE / LAITON**  
**SONDERANFERTIGUNGEN - NEOPREN / MESSING**  
**INSERTOS ROSCADOS ESPECIALES - NEOPRENO / LATON**



	S	D +0.1/-0.2	 +0,1/-0	T +/-0.3	K +/-0.3	L +1.0/-0.5	
M4	0.4 - 4	7.9	8,1	11	1.2	12.6	0.36

**MATERIAL: NEOPRENE-BRASS**

Disegno di proprietà della Fixi S.r.l. - Non può essere copiato, riprodotto o comunicato a terze persone senza autorizzazione.  
 Drawing owned by Fixi S.r.l.- It cannot be copied, reproduced or communicated to third parties without permission.

**Disegnato da / Designed by:** Ufficio Tecnico  
**Ufficio Tecnico / Tech Office:** tech@fixi.it

27/12/2024

**CODICE PRODOTTO / PART NUMBER**

85RN414

**FIXI®**

FIXI s.r.l. Via Bellardi 40/A  
 10146 - Torino (Italy)  
 www.fixi.it - info@fixi.it